

#RetailBeauty

CSP EMEA
connectic kits

Ind00, 1^{er} diffusion 01.04.2021

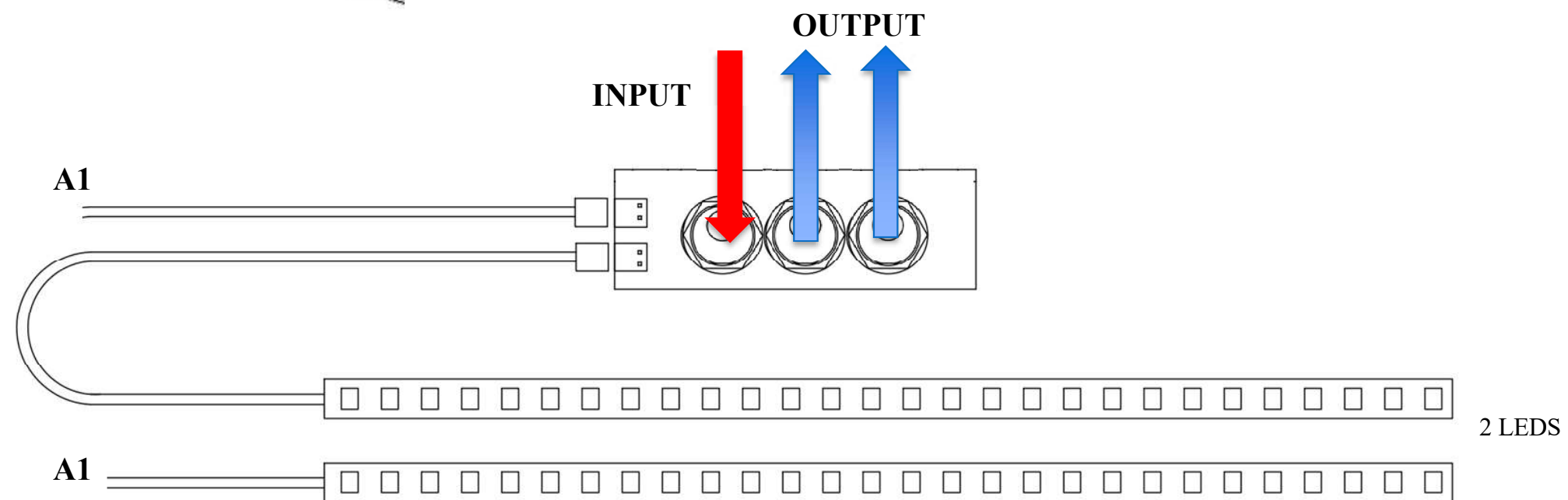
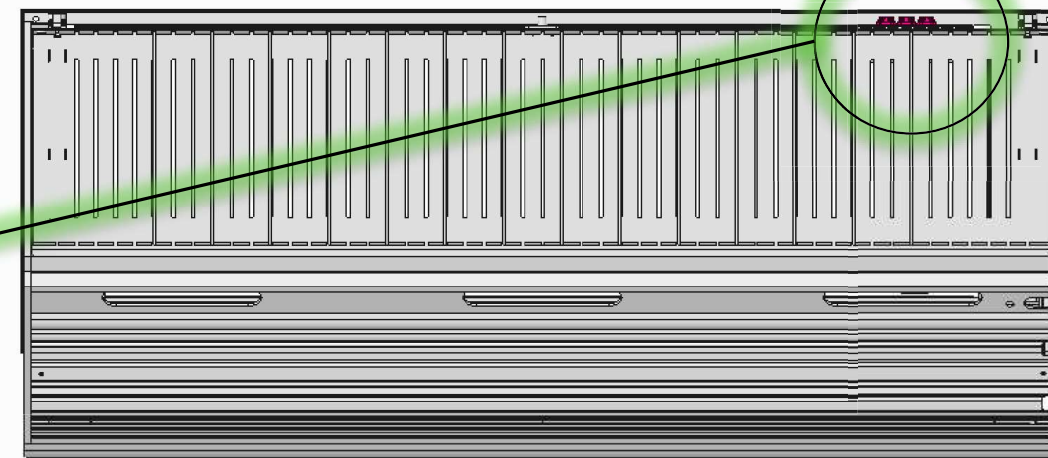
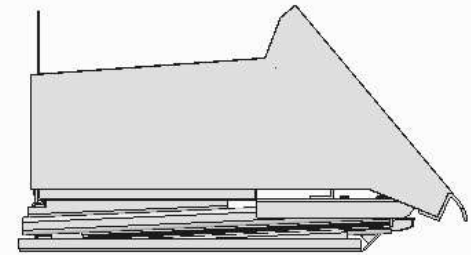
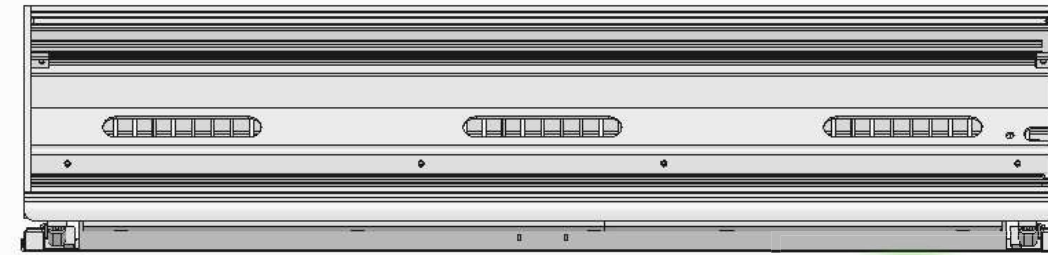
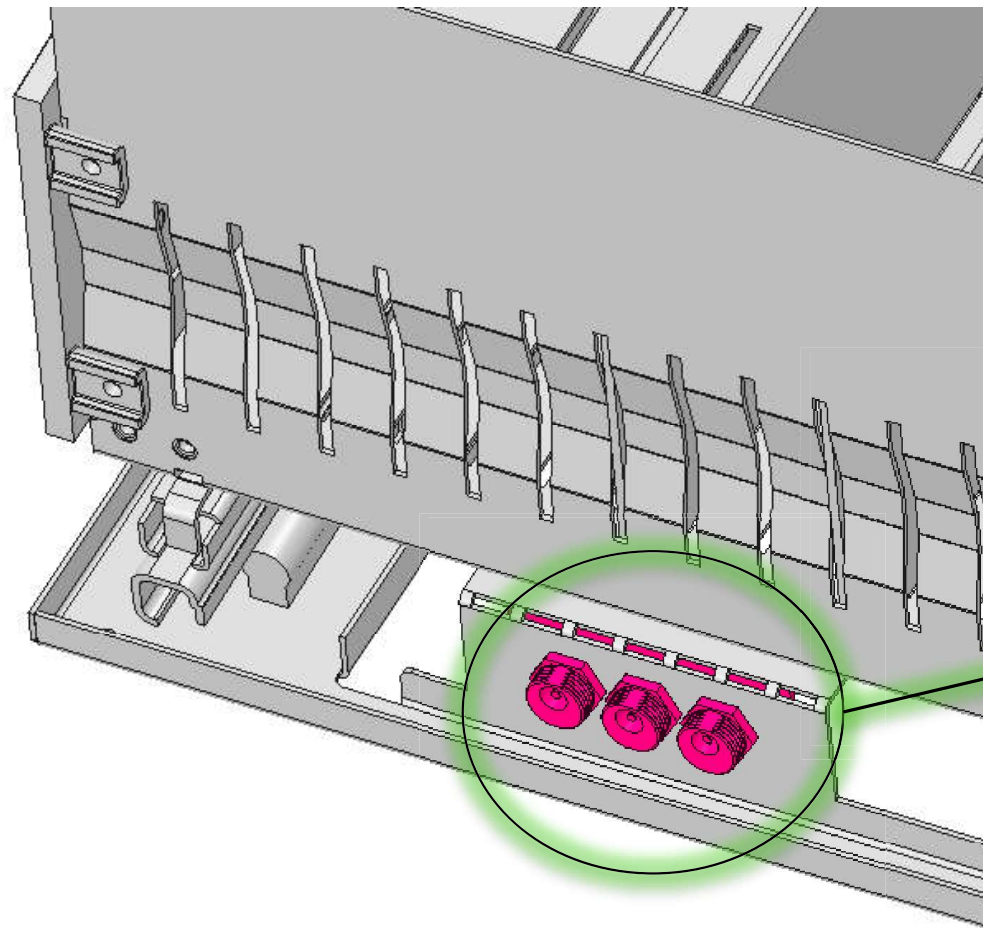
Ind01, Maj 08.04.2021

Ind02, Maj 13.04.2021

Ind03, Maj 13.04.2021



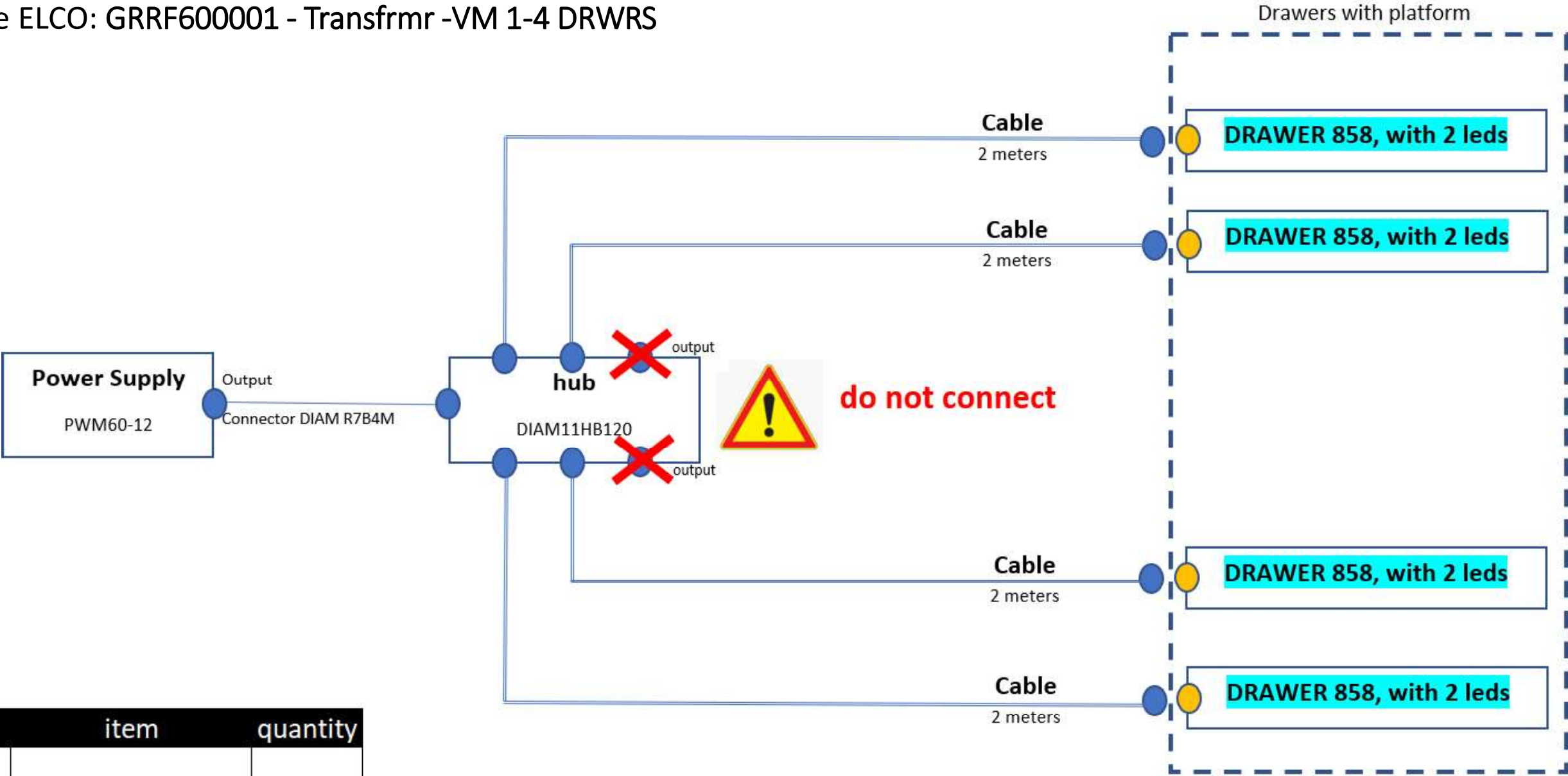
CONNECTOR DRAWER WHIT PLATFORM



CONNECTIC KIT, 4 drawers, 60Watts



Reference DIAM: 55012-5001-000
Reference ELCO: GRRF600001 - Transfrm -VM 1-4 DRWRS



désignation	item	quantity
power supply 60W whit output connector R7B4M	DIAM11 0161	1
hub	DIAM11HB120	1
cable 2 meters	EL-CBL-2001-2000	4

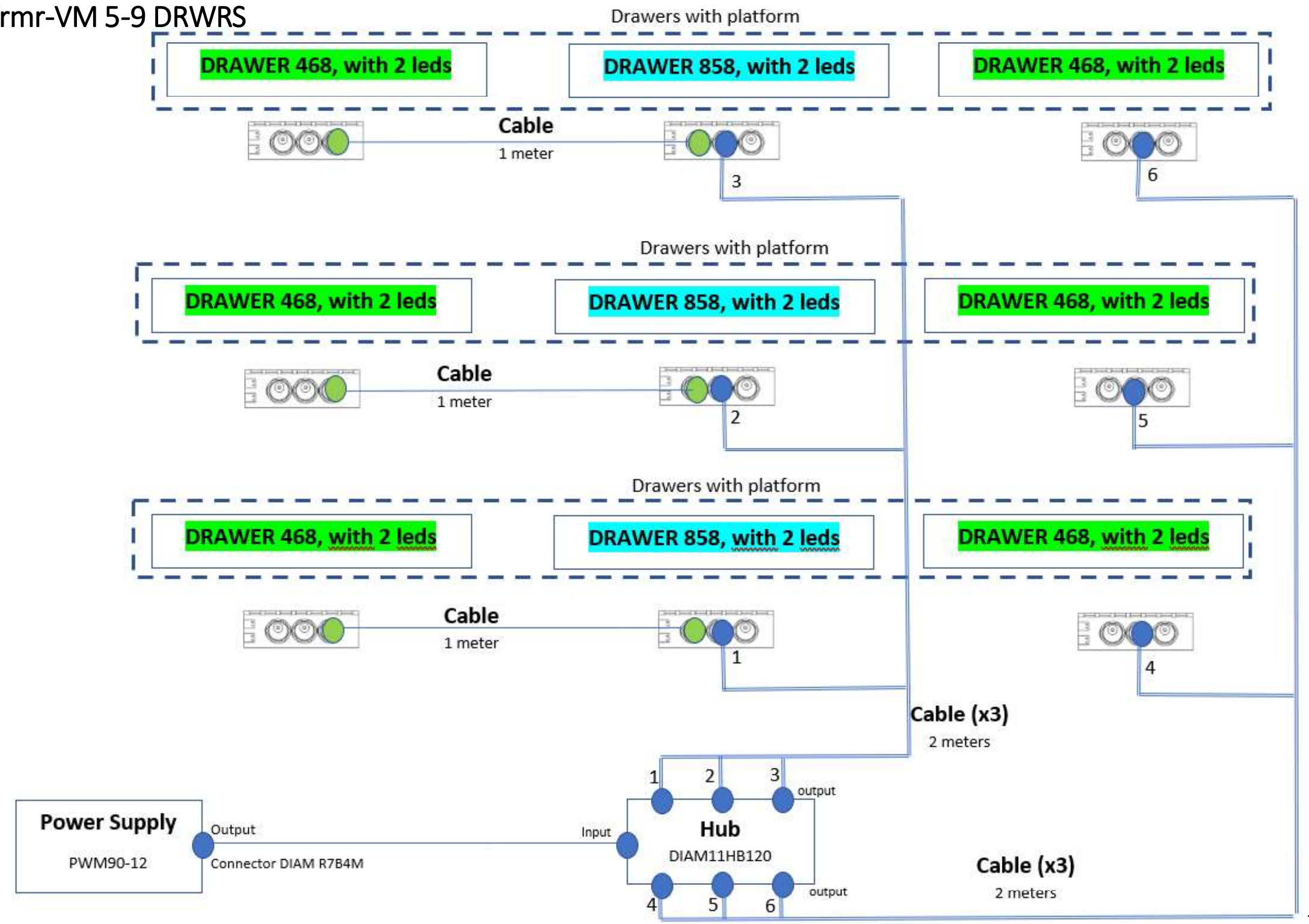


CONNECTIC KIT, 9 drawers, 90Watts

Reference DIAM: 55012-5002-000

Reference ELCO: GRRE600001 - Transfrm-VM 5-9 DRWRS

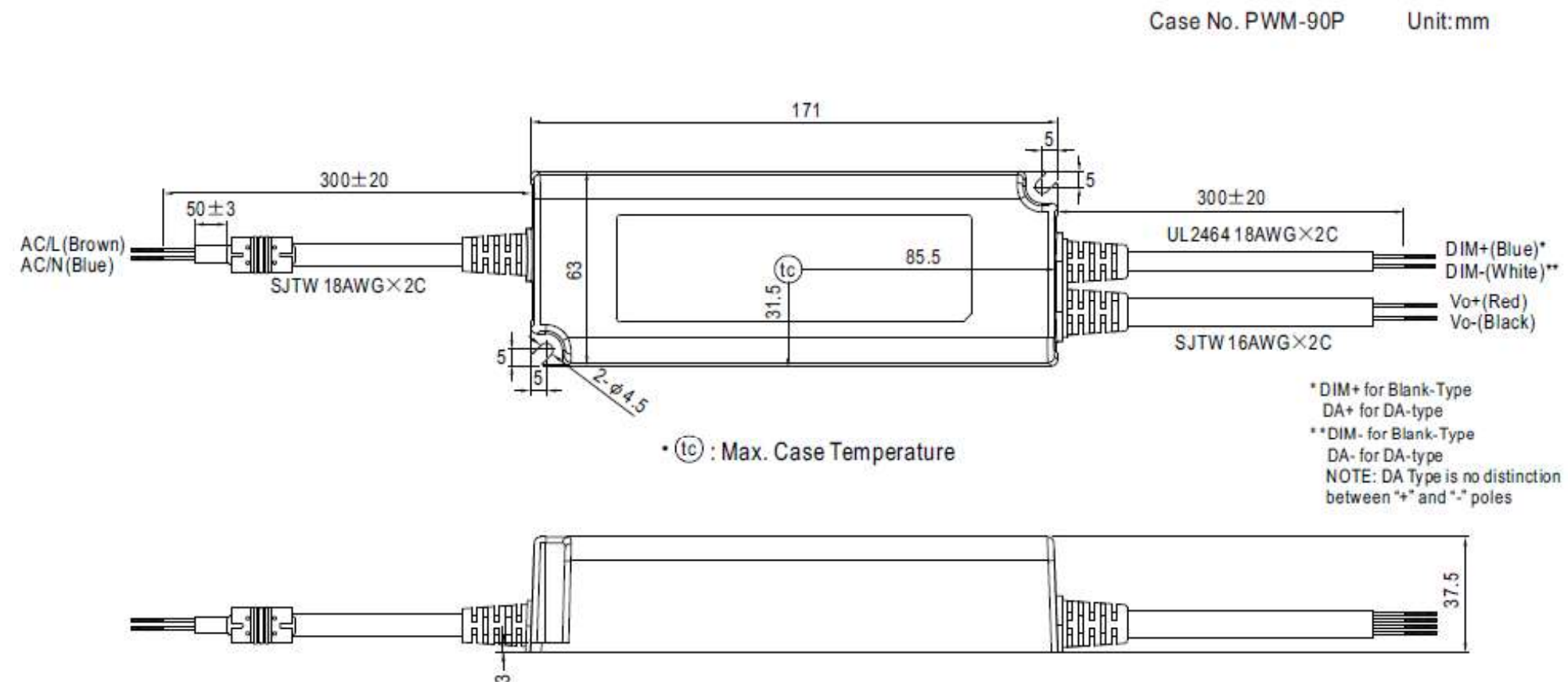
désignation	item	quantity
power supply 90W whit output connector R7B4M	DIAM110090	1
hub	DIAM11HB120	1
cable 2 meters	EL-CBL-2001-2000	6
cable 1 meter	EL-CBL-2001-1000	3



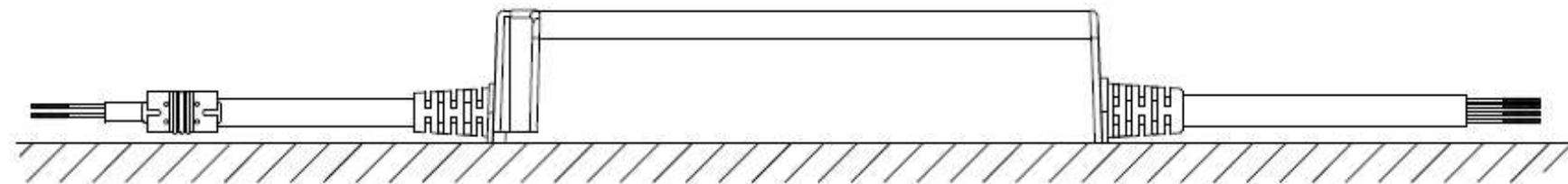


DIAM110090 POWER SUPPLY 90 WATTS, certificate and technical document

Mechanical Specification





Recommend Mounting Direction



DIAM110090 POWER SUPPLY 90 WATTS, certificate and technical document

PWM-90-CE-declaration



Declaration of Conformity

For the following equipment :

Product Name: LED driver
Model Designation: NPF-90X-Y (X=Blank or D ; Y=12,15,20,24,30,36,42,48,54);PWM-90-x(x=12,24,36,48)
PWM-90-12DA,24DA

is herewith confirmed to comply with the requirements set out in the Council Directive, the following standards were applied :

RoHS Directive (2011/65/EU)

Energy-Related Products Directive (2009/125/EC)
Implementing measure COMMISSION REGULATION(EC) No 1194/2012

Low Voltage Directive (2014/35/EU) :
EN61347-1:2015 EN61347-2-13:2014/A1:2017 ENEC certificate No: 35-107322
EN62384:2008+A1:2009

Electromagnetic Compatibility Directive (2014/30/EU) :
EMI (Electro-Magnetic Interference)
Conducted emission / Radiated emission
EN55015:2013+A1:2015

Harmonic current	EN61000-3-2:2014	Class C(≥ 60% load)
Voltage flicker	EN61000-3-3:2013	

EMS (Electro-Magnetic Susceptibility)
EN61547:2009

ESD air	EN61000-4-2:2009	Level 3	8KV
ESD contact	EN61000-4-2:2009	Level 2	4KV
RF field susceptibility	EN61000-4-3:2006+A1:2008+A2:2010	Level 2	3V/m
EFT bursts	EN61000-4-4:2012	Level 2	1KV/5KHz
Surge susceptibility	EN61000-4-5:2014	Level 4	2KV/Line-Line
Conducted susceptibility	EN61000-4-6:2014	Level 2	3V
Magnetic field immunity	EN61000-4-8:2010	Level 2	3A/m
Voltage dip, interruption	EN61000-4-11:2004	>95% dip 0.5 periods 30% dip 25 periods >95% interruptions 250 periods	

Note:
Component power supply will be operated with a final equipment. Since EMC performance will be affected by the complete installation, the final equipment manufacturers must re-qualify EMC Directive on the complete installation again.
Tests above are only to be performed with LEDs.
For guidance on how to perform these EMC tests, please refer to TDF (Technical Documentation File).
To fulfill requirements of the latest ErP regulation for lighting fixtures, this LED power supply can only be used behind a switch without permanently connected to the mains.

This Declaration is effective from serial number HB9xxxxxxx



Person responsible for marking this declaration :

MEAN WELL Enterprises Co., Ltd.
(Manufacturer Name)
No.28, Wuquan 3rd Rd., Wugu Dist., New Taipei City 24891, Taiwan
(Manufacturer Address)

Johnny Huang/Manager, Certification Center : Alex Tsai/Director, Marketing Department :
(Name / Position) (Signature) (Name / Position) (Signature)
Taiwan Feb. 16th, 2019
(Place) (Date)

Version : 7

PWM-90-CB-certificat



Ref. Certif. No.
NO82282

IEC SYSTEM FOR MUTUAL RECOGNITION OF TEST CERTIFICATES FOR ELECTRICAL EQUIPMENT (IECEE) CB SCHEME
SYSTEME CB D'ACCEPTATION MUTUELLE DE CERTIFICATS DESSAIS DES EQUIPEMENTS ELECTRIQUES (IECEE) METHODE OC

Product
Produit

Name and address of the applicant
Nom et adresse du demandeur

Name and address of the manufacturer
Nom et adresse du fabricant

Name and address of the factory
Nom et adresse de l'usine

Rating and principal characteristics
Valeurs nominales et caractéristiques principales

Trademark (if any)
Marque de fabrique (si elle existe)

Type of Manufacturer's Testing Laboratories used
Type de programme du laboratoire d'essais constructeur

Model / Type Ref.
Ref. De type

Additional information (if necessary may also be reported on page 2)
Les informations complémentaires (si nécessaire, peuvent être indiquées sur la deuxième page)

A sample of the product was tested and found to be in conformity with
Un échantillon de ce produit a été essayé et a été considéré conforme à la


As shown in the Test Report Ref. No. which forms part of this Certificate
Comme indiqué dans le Rapport de tests numéro de référence qui constitue partie de ce Certificat

This CB Test Certificate is issued by the National Certification Body
Ce Certificat de test OC est établi par l'Organisme National de Certification

LED controlgear

Mean Well Enterprises Co., Ltd.
No.28, Wuquan 3rd Rd., Wugu Dist., New Taipei City 248 Taiwan

Mean Well Enterprises Co., Ltd.
No.28, Wuquan 3rd Rd., Wugu Dist., New Taipei City 248 Taiwan




PWM-90-z

IP67 or IP20, to: 85°C, ta: 50°C, pf: 0.95, independent SELV.
The "z" in the models name PWM-90-z can be 12, 24, 36 or 48 to denote output voltage.

IEC 61347-2-13(ed.1)
IEC 61347-1(ed.2);am1;am2

262814



Gaustadalléen 30
NO-0373 Oslo, Norway

Okhyun Jeon
Signature: Okhyun Jeon
Certification Department

Date: 08-08-2014

Issued 2007-04

1/2

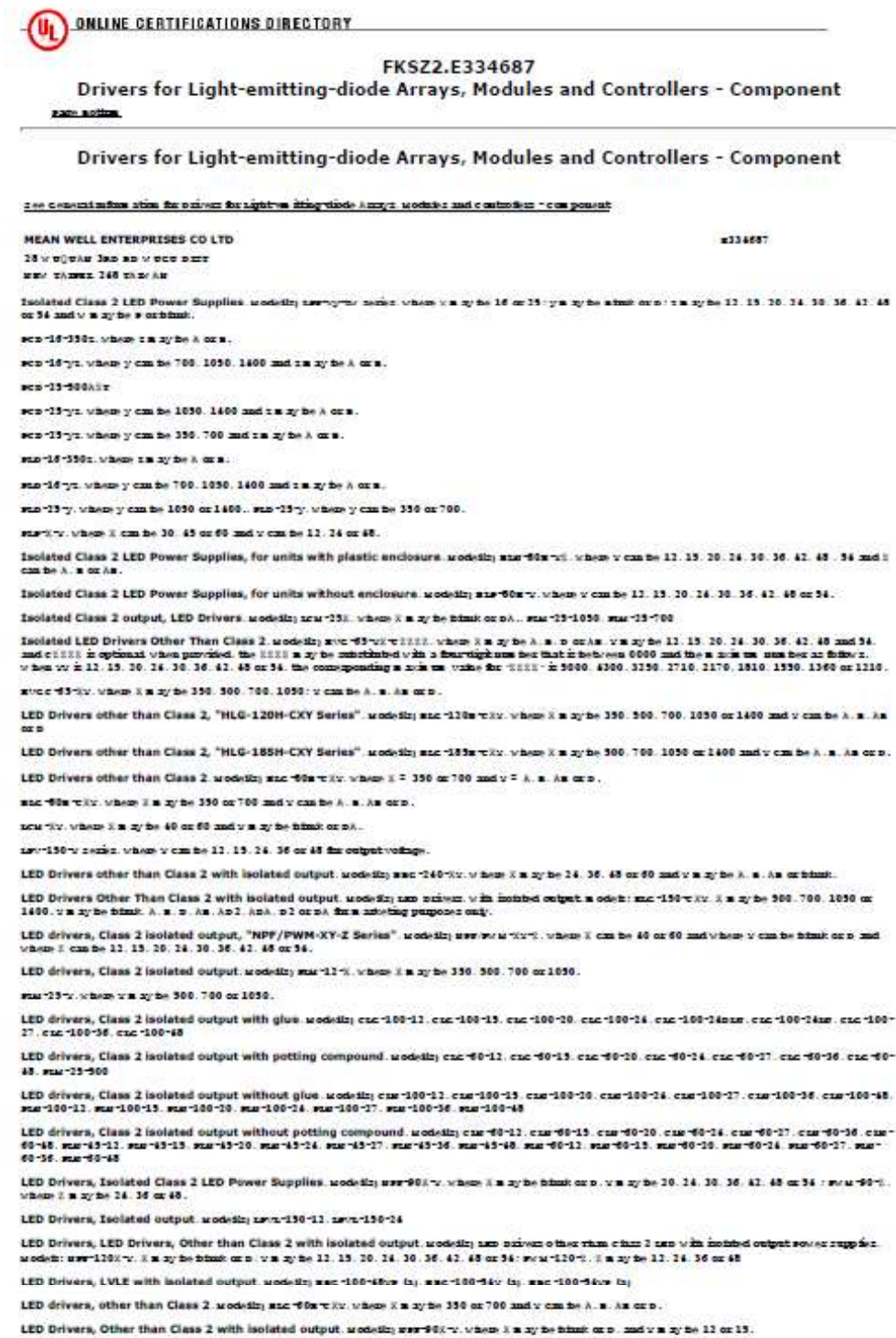


DIAM110090 POWER SUPPLY 90 WATTS, certificate and technical document

PWM-90-EMC-certificat



PWM90-12_E334687-UL-certificat

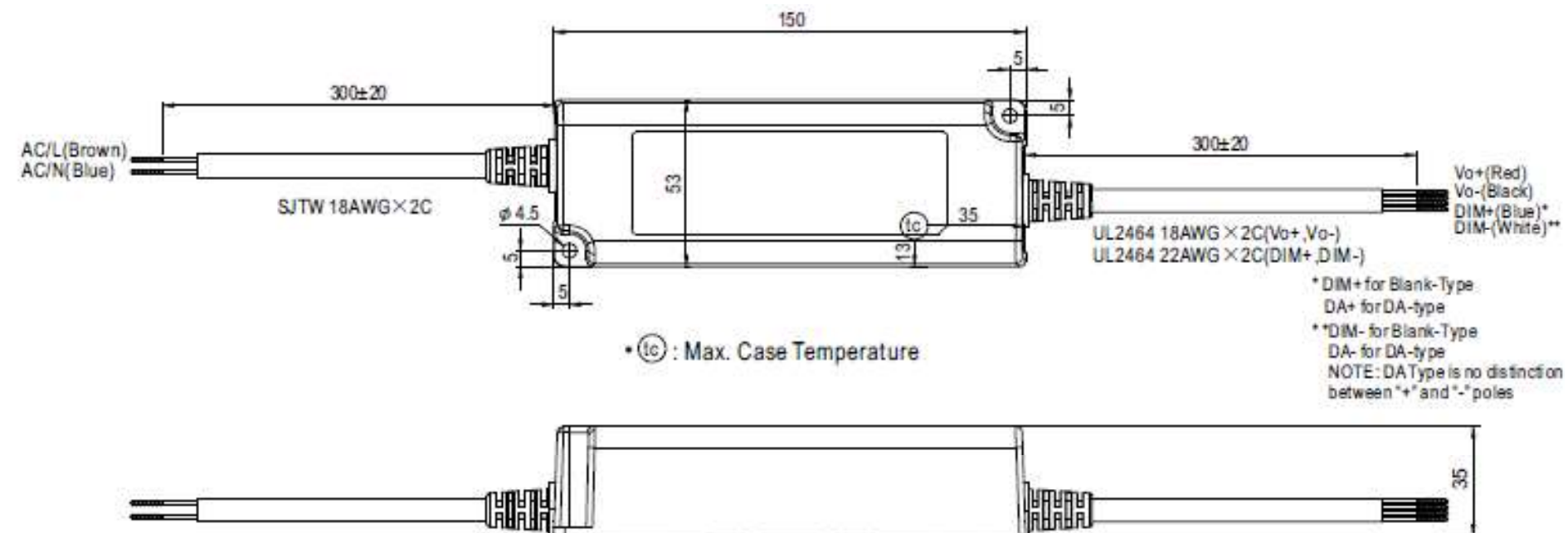




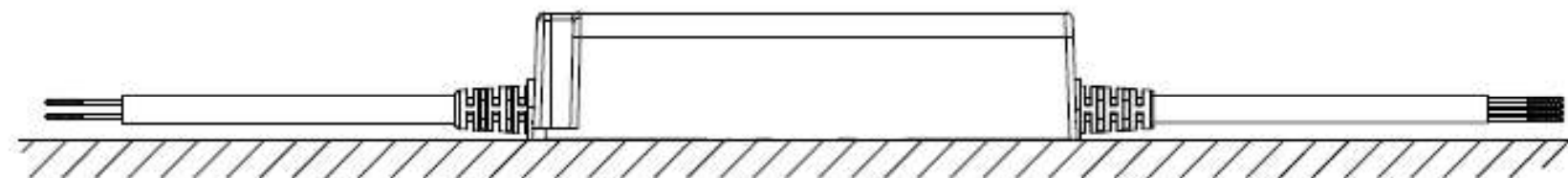
DIAM11 0161POWER SUPPLY 60 WATTS, certificate and technical document

Mechanical Specification

Case No. NPF-60A Unit:mm





Recommend Mounting Direction








DIAM11 0161POWER SUPPLY 60 WATTS, certificate and technical document

PWM-60-CE-declaration

		
Declaration of conformity		
For the following equipment :		
Product Name: LED Driver		
Model Designation: NPF-xy-z (x=40,60 ; y= D or Blank ; z=12,15,20,24,30,36,42,48,54) PWM-x-y (x=40,60 ; y= 12,24,36,48) PWM-60-12DA,24DA		
is herewith confirmed to comply with the requirements set out in the Council Directive, the following standards were applied :		
RoHS Directive (2011/65/EU)		
Energy-Related Products Directive (2009/125/EC) Implementing measure COMMISSION REGULATION(EC) No 1194/2012		
Low Voltage Directive (2014/35/EU) : EN 61347-1:2015 EN61347-2-13:2014/A1:2017 EN 62384-2006+A1:2009 ENEC certificate No: 35-107078		
Electromagnetic Compatibility Directive (2014/30/EU) :		
EMI (Electro-Magnetic Interference)		
Conducted emission / Radiated emission EN55015:2013+A1:2015		
Harmonic current	EN61000-3-2: 2014	Class C(≥ 50% load)
Voltage flicker	EN61000-3-3: 2013	
EMS (Electro-Magnetic Susceptibility)		
EN61547:2009		
ESD air	EN61000-4-2:2009	Level 3 8KV
ESD contact	EN61000-4-2:2009	Level 2 4KV
RF field susceptibility	EN61000-4-3:2006+A1:2008+A2:2010	Level 2 3V/m
EFT bursts	EN61000-4-4:2012	Level 2 1KV/5KHz
Surge susceptibility	EN61000-4-5:2014	Level 4 2KV/Line-Line
Conducted susceptibility	EN61000-4-6:2014	Level 2 3V
Magnetic field immunity	EN61000-4-8:2010	Level 2 3A/m
Voltage dip, interruption	EN61000-4-11:2004	30% dip 10 periods 100% interruptions 0.5 periods
Note: Component power supply will be operated with a final equipment. Since EMC performance will be affected by the complete installation, the final equipment manufacturers must re-qualify EMC Directive on the complete installation again. Tests above are only to be performed with LEDs. For guidance on how to perform these EMC tests, please refer to TDF (Technical Documentation File).		
This Declaration is effective from serial number HB9xxxxxxx		
Person responsible for marking this declaration :		
MEAN WELL Enterprises Co., Ltd.		
(Manufacturer Name)		
No.28, Wuquan 3rd Rd., Wugu Dist., New Taipei City 24891, Taiwan		
(Manufacturer Address)		
Johnny Huang/Manager, Certification Center :	Alex Tsai/Director, Marketing Department :	
(Name / Position)	(Signature)	(Name / Position)
Taiwan	Jan. 9th, 2019	
(Place)	(Date)	

PWM-60-CB-certificat

		Ref. Certif. No. NL-56379
IEC SYSTEM FOR MUTUAL RECOGNITION OF TEST CERTIFICATES FOR ELECTRICAL EQUIPMENT (IECEE) CB SCHEME		
CB TEST CERTIFICATE		
Product	Independent LED controlgears	
Name and address of the applicant	MEAN WELL Enterprises Co., Ltd. No.28, Wuquan 3rd Rd., Wugu District, New Taipei City 24891 Taiwan	
Name and address of the manufacturer	MEAN WELL Enterprises Co., Ltd. No.28, Wuquan 3rd Rd., Wugu District, New Taipei City 24891 Taiwan	
Name and address of the factory	<input checked="" type="checkbox"/> Additional information on page 2 MEAN WELL (GUANGZHOU) Electronics Co., Ltd. Huadu Branch No.11 Jingu South Road, Huadong Town, Huadu District, Guangzhou 510890, Guangdong China	
Ratings and principal characteristics	100-240 Vac, 0,6 A, 50/60 Hz (for NPF-40-f-z, PWM-40-f); 100-240 Vac, 0,8 A, 50/60 Hz (for NPF-60-f-z, PWM-60-f, PWM-60-fDA). Class II, IP67, ta: 50 °C, tc: 85 °C, λ: 0,96, independent SELV, thermal protection: 110 °C, constant voltage type. (Details refer to model list of test report.)	
Trademark (if any)		
Customer's Testing Facility (CTF) Stage used		
Model / Type Ref.	1) NPF-xy-z: the "x" in the model name can be 40 or 60 to denote output wattage in watt; the "y" in the model name can be D or blank to denote with dimming function (D) or without (blank); the "z" in the model name can be 12, 15, 20, 24, 30, 36, 42, 48 or 54 to denote output voltage in volt. 2) PWM-x-f: the "x" in the model name can be 40 or 60 to denote output wattage in watt; the "f" in the models name can be 12, 24, 36 or 48 to denote output voltage in volt. 3) PWM-60-fDA: the "f" in the models name can be 12 or 24 to denote output voltage in volt.	
Additional information (if necessary may also be reported on page 2)	<input type="checkbox"/> Additional information on page 2 This CB Test Certificate is an addition to CB NL-50193 with Test Report Number 4340673.60 dated 2018-01-08 due to addition of new series model and factory.	
A sample of the product was tested and found to be in conformity with	IEC 61347-1:2015, IEC 61347-2-13:2014, IEC 61347-2-13:2014/AMD1:2016 National differences: EU Group Differences, EU Special National Conditions, AU, NZ	
This CB Test Certificate is issued by the National Certification Body		
DEKRA Certification B.V. Meander 1061, NL-6826 MJ Arnhem, Netherlands		
Date: 2019-01-09	Signature: Miranda Zhou	page 1 of 3



PWM-60-EMC-certificat

PWM-60-E334687-UL-certificat



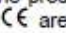
ATTESTATION
of conformity with European Directives

Attestation Number: 1788AB1211N034003
Product: LED Driver
Brand Name: Mean Well
Models: NPF-xy-z (x=40, 60; y=D or blank; z=12, 15, 20, 24, 30, 36, 42, 48, 54)
PWM-x-y (x=40, 60; y=12, 24, 36, 48)
Additional models: See report items 2.1
Applicant: Mean Well Enterprises, Co., Ltd.
Address: No.28, Wuquan 3rd Rd., Wugu Dist., New Taipei City 248, Taiwan
Technical Characteristics: NPF-40-z NPF-40D-z PWM-40-y:
100-240VAC 0.6A 50/60Hz
277VAC 0.25A 50/60Hz (277VAC for North America only)
NPF-60-z NPF-60D-z PWM-60-y:
100-240VAC 0.8A 50/60Hz
277VAC 0.32A 50/60Hz (277VAC for North America only)

The submitted sample of the above equipment has been tested for  marking according to following European Directive and standards:


- Electromagnetic Compatibility Directive 2014/30/EU

Standards	Report Number	Report date
EN 55015:2013 +A1:2015 EN 61000-3-2:2014 EN 61000-3-3:2013 EN 61547:2009	CE171211N034-3	Dec. 26, 2017

The referred test report(s) show that the product complies with standard(s) recognized as giving presumption of compliance with the essential requirements in the specified European Directive.
This verification does not imply assessment of the production of the product. The  marking may be affixed if all relevant and effective European Directives with  are applicable.



Supervisor
EMC Department



Name: Glyn He
Date: Dec. 26, 2017

This document shall not be reproduced, except in full, without the written approval of
Bureau Veritas Shenzhen Co., Ltd. Dongguan Branch.
Information given in this document is related to the tested specimen of the described electrical sample.

UL Product iQ™

FKSZ2.E334687 - DRIVERS FOR LIGHT-EMITTING-DIODE ARRAYS, MODULES AND CONTROLLERS - COMPONENT
Drivers for Light-emitting-diode Arrays, Modules and Controllers - Component

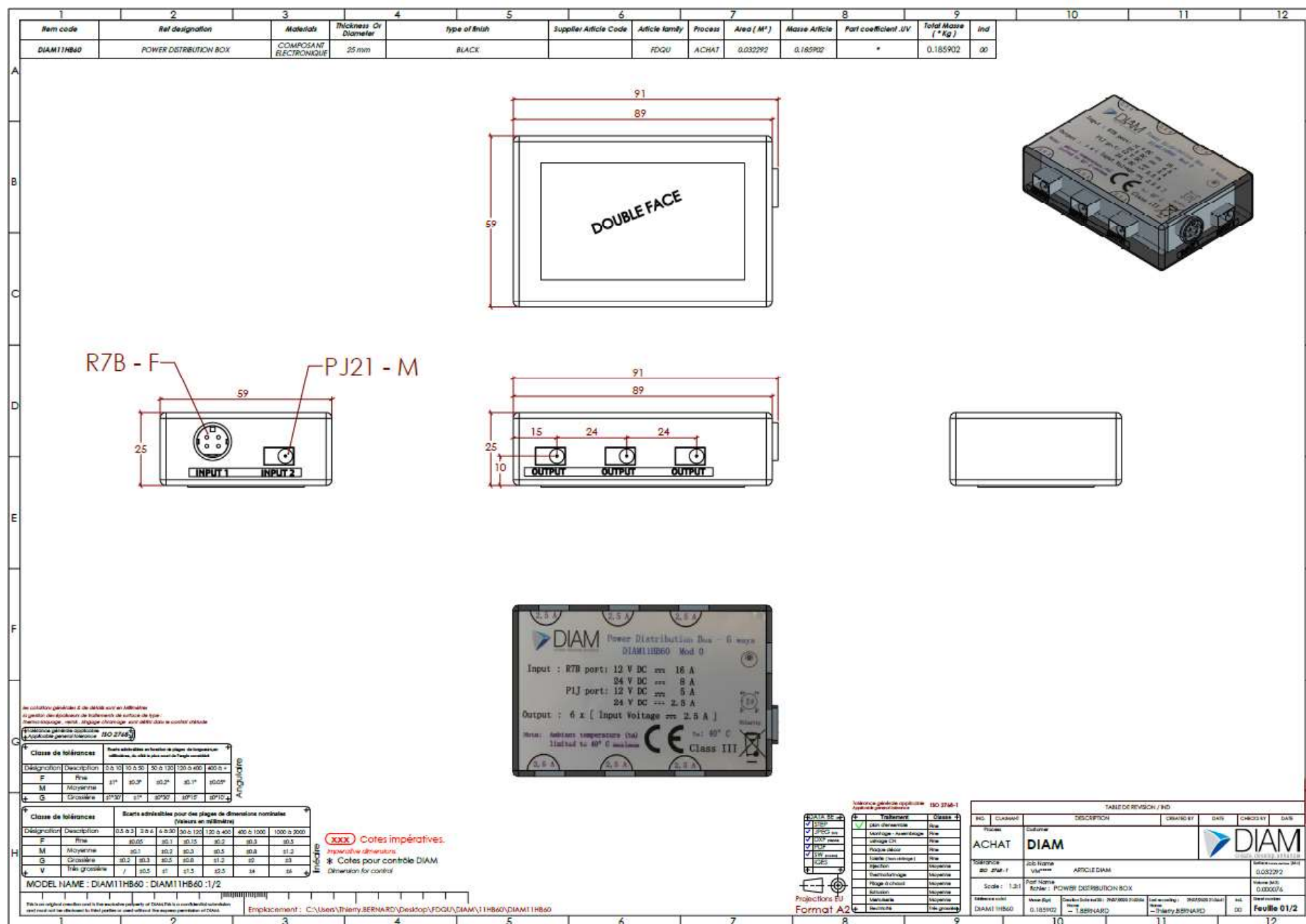
See General Information for Drivers for Light-emitting-diode Arrays, Modules and Controllers - Component

MEAN WELL ENTERPRISES CO LTD
NO 28 WUQUAN 3RD RD
WUGU DISTRICT
NEW TAIPEI CITY, 24891 TAIWAN
Isolated Class 2 LED Power Supplies, Model(s) LPF-xy-zw series, where x may be 16 or 25; y may be Blank or D; z may be 12, 15, 20, 24, 30, 36, 42, 48 or 54 and w may be P or blank.
Isolated Class 2 LED Power Supplies, Model(s) PCD-16-350z, where z may be A or B, PCD-25-500AZT
Isolated Class 2 LED Power Supplies, Model(s) PCD-25-yz, where y can be 1050, 1400 and z may be A or B.
Isolated Class 2 LED Power Supplies, Model(s) PCD-25-yz, where y can be 350, 700 and z may be A or B.
Isolated Class 2 LED Power Supplies, Model(s) PLD-16-350z, where z may be A or B.
Isolated Class 2 LED Power Supplies, Model(s) PLD-16-yz, where y can be 700, 1050, 1400 and z may be A or B.
Isolated Class 2 LED Power Supplies, Model(s) PLD-25-y, where y can be 1050 or 1400, PLD-25-y, where y can be 350 or 700.
Isolated Class 2 LED Power Supplies, Model(s) PLP-X-Y, where X can be 30, 45 or 60 and Y can be 12, 24 or 48.
Isolated Class 2 output, LED Drivers, Model(s) PLM-25-1050, PLM-25-700
LED Driver, Isolated Class 2 output, Model(s) LVF-40-36LP
LED Drivers other than Class 2, "HLG-120H-CXY Series", Model(s) HLG-120H-CXY, where X may be 350, 500, 700, 1050 or 1400 and Y can be A, B, AB or D
LED Drivers other than Class 2, "HLG-185H-CXY Series", Model(s) HLG-185H-CXY, where X may be 500, 700, 1050 or 1400 and Y can be A, B, AB or D.
LED Drivers other than Class 2, Model(s) LPV-150-Y Series, where Y can be 12, 15, 24, 36 or 48 for output voltage.
LED Drivers Other Than Class 2 with isolated output, Model(s) HBG-240-XY and HBG-240P-xy, Where X may be 24, 36, 48 or 60 and Y may be A, B, AB or blank.
LED Drivers Other Than Class 2 with isolated output, Model(s) HLG-240H-C1050ACRE
LED drivers, Class 2 isolated output, Model(s) PLM-12-X, where X may be 350, 500, 700 or 1050, PLM-25-Y, where Y may be 500, 700 or 1050.
LED drivers, Class 2 isolated output with glue, Model(s) CLG-100-12, CLG-100-15, CLG-100-20, CLG-100-24, CLG-100-24DLU, CLG-100-24LU, CLG-100-27, CLG-100-36, CLG-100-48

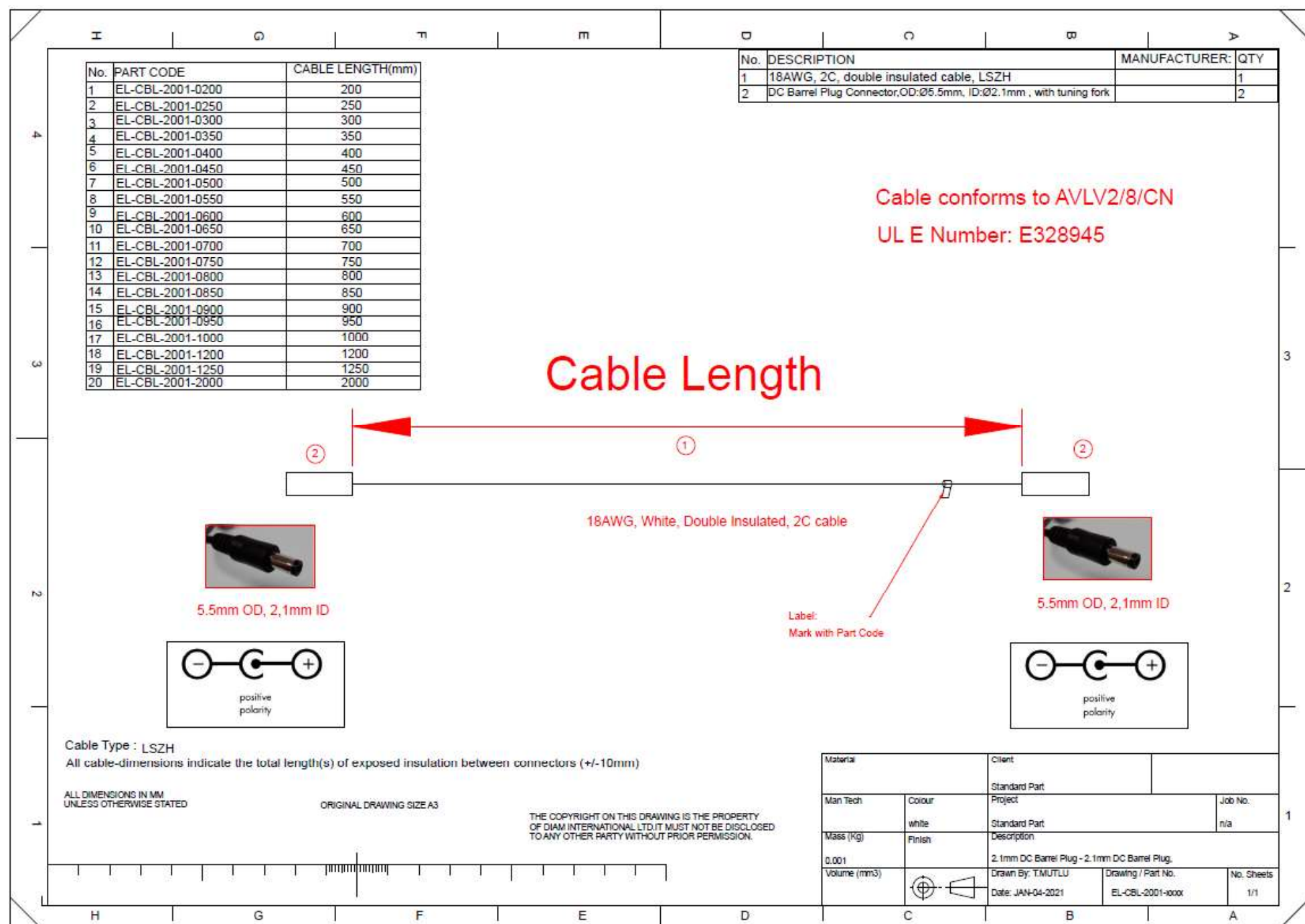
DIAM11HB120, Hub , certificate and technical document



CE-EMC-certificat

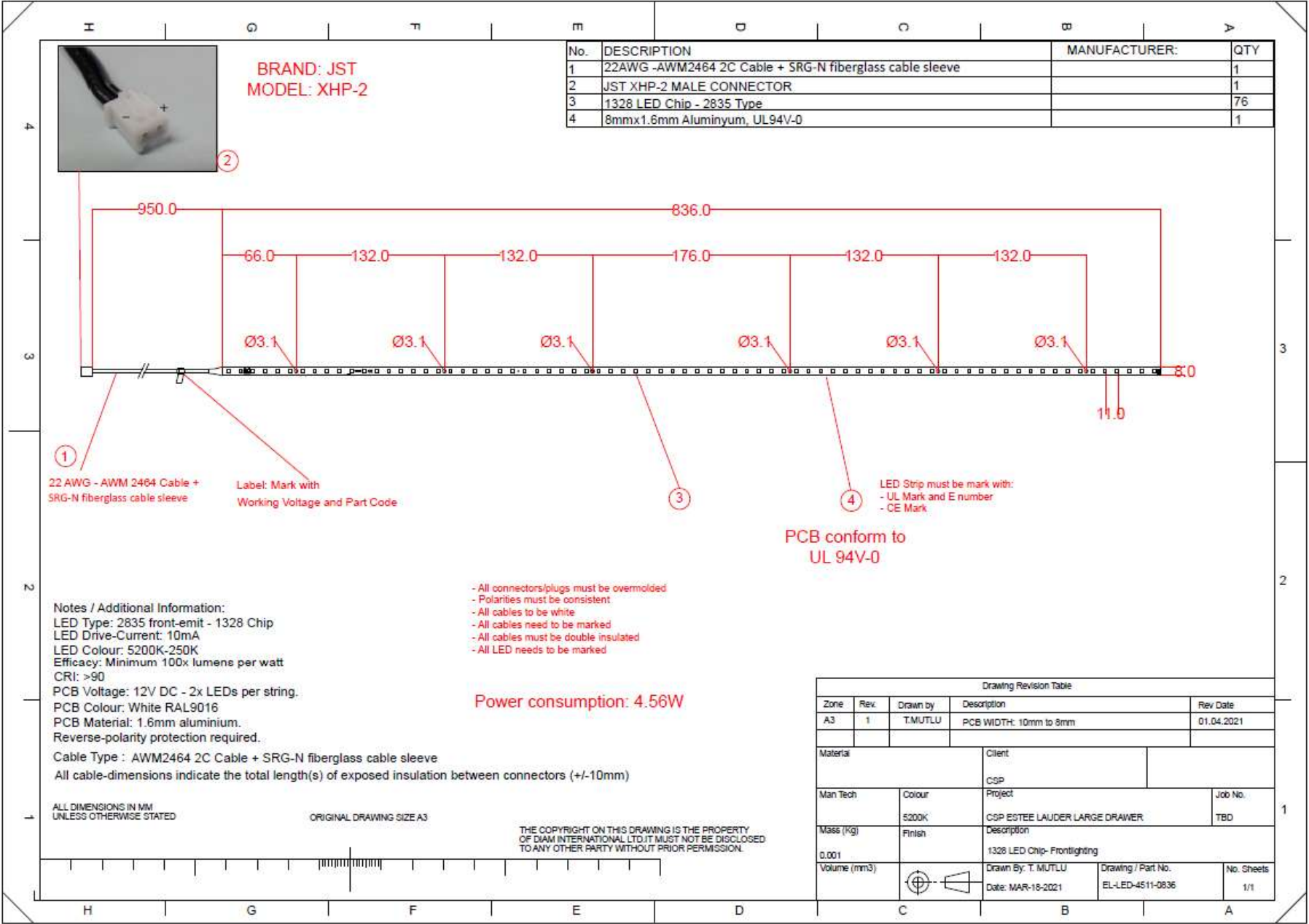


CERTIFICATE of Conformity		TÜVRheinland
EC Council Directive 2014/30/EU		Electromagnetic Compatibility
Registration No.:	AE 50350176 0001	
Report No.:	15065113 002	
Holder:	DIAM DISPLAY (CHINA) CO.,LTD. No.299 Qinhe Road Zhangpu Town Kunshan, Jiangsu 215321 P.R. China	
Product:	Power Distributer (Power Distribution Box)	
Identification:	DIAM11HB60 DIAM11HB120 Serial No.: n.a. Remark: Refer to test report 15065113 002 for details.	
Tested acc. to:	EN 55015:2013+A1 EN 61547:2009	
This certificate of conformity is based on an evaluation of a sample of the above mentioned product. Technical Report and documentation are at the Licence Holder's disposal. This is to certify that the tested sample is in conformity with all provisions of Annex I of Council Directive 2014/30/EU. This certificate does not imply assessment of the production of the product and does not permit the use of a TÜV Rheinland mark of conformity. The holder of the certificate is authorized to use this certificate in connection with the EC declaration of conformity according to the a.m. Directive.		
Date 04.07.2016		
TÜV Rheinland LGA Products GmbH - Tillystraße 90 431 Nürnberg		
The CE marking may only be used if all relevant and effective EC Directives are complied with.		



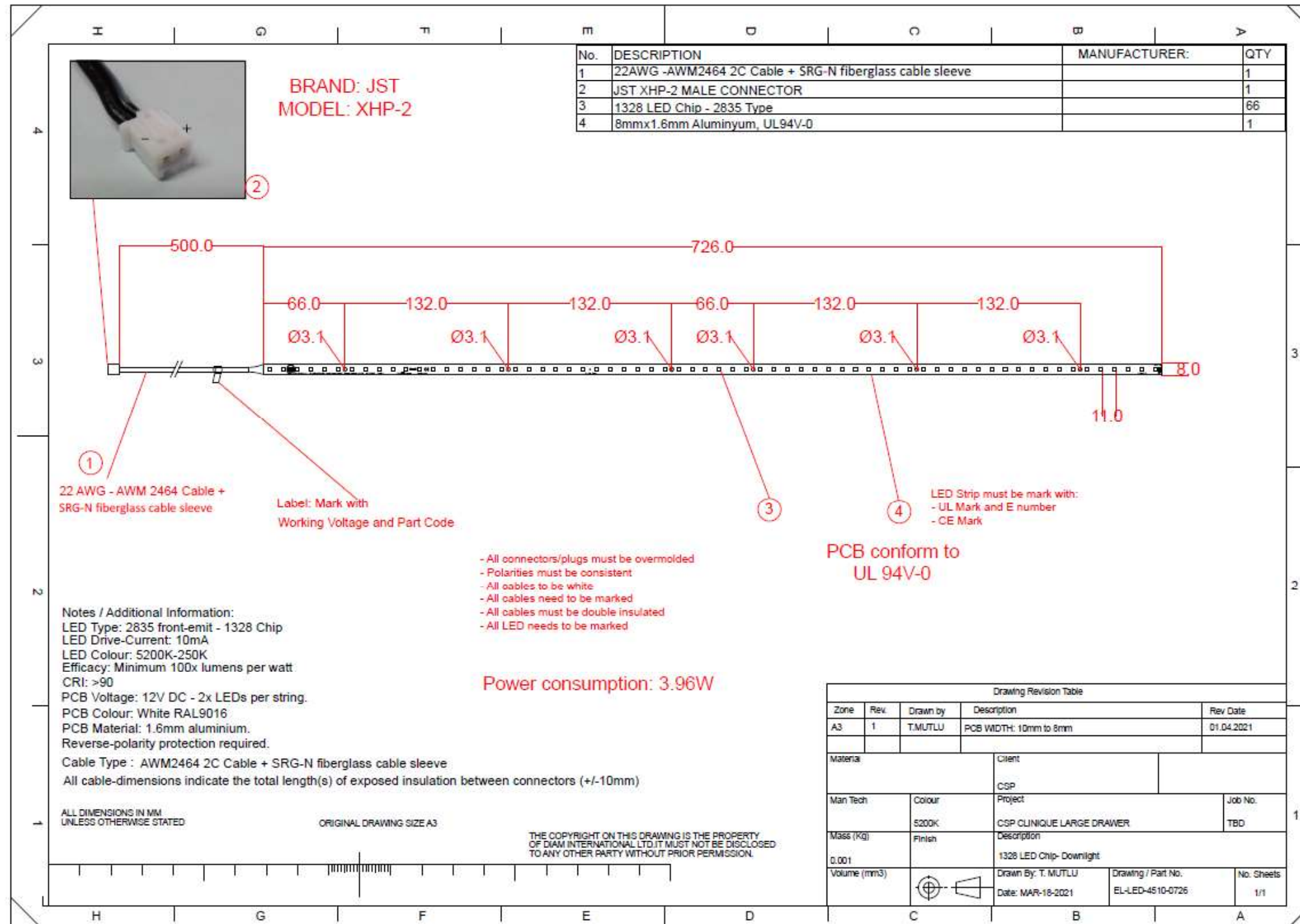


EL-LED-4511-0836 >>> Estee Lauder large drawer inner led



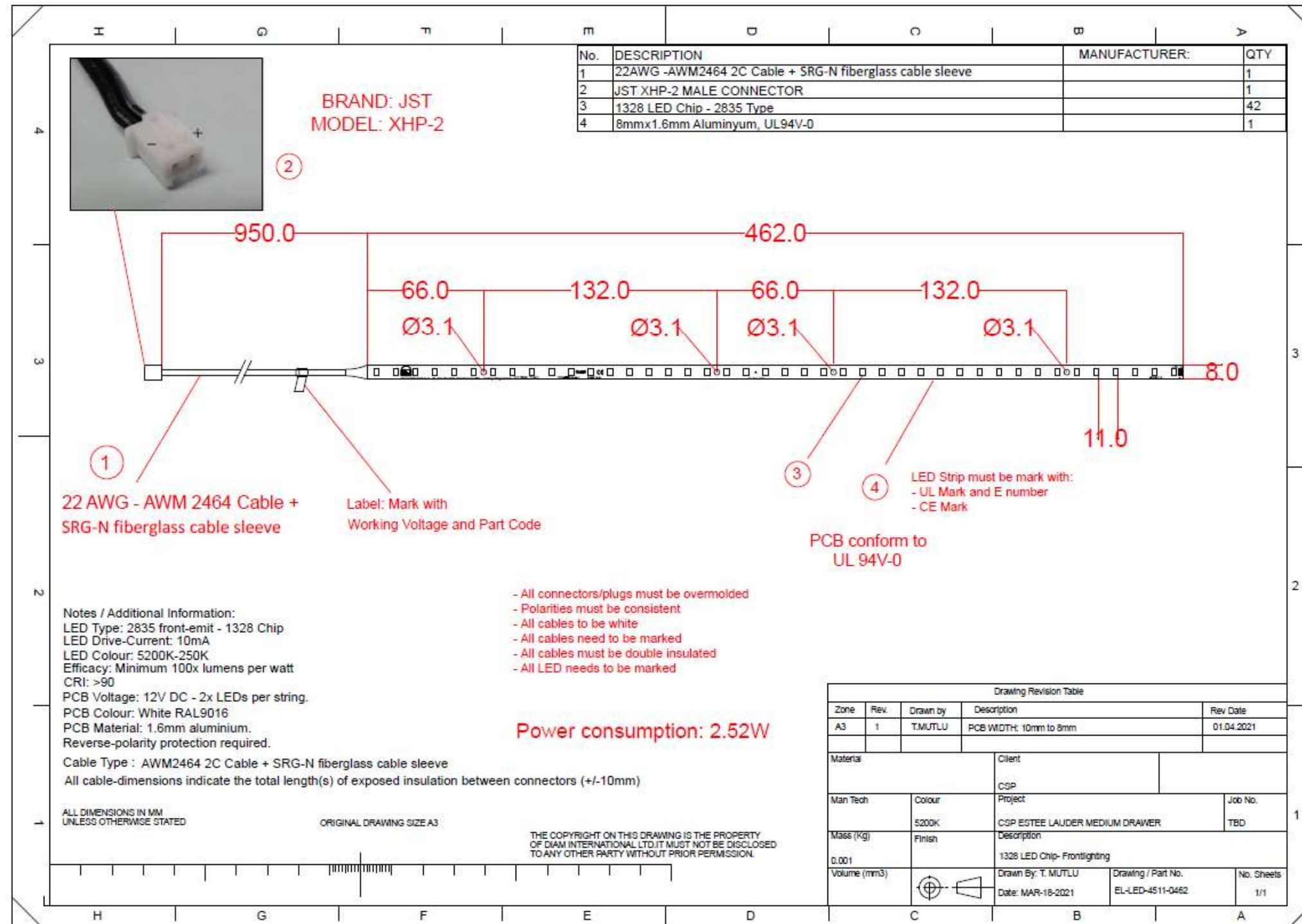


EL-LED-4510-0726 >>> Estee lauder large drawer downlighting led





EL-LED-4511-0462 >>> Estee Lauder medium drawer inner led





#RetailBeauty

YOUR BRAND
OUR EXPERTISE
THEIR EXPERIENCE

 **DIAM**